

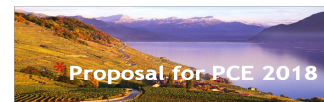
21 March 2013



Growing a Person- Centered Society

Lausanne - Switzerland

10-14 July 2018 (Tuesday to Saturday)



We are pleased to submit our proposal for hosting PCE 2018 in Lausanne, Switzerland.

1. Organizing team

Core team

The core team will consist of 6 dedicated persons, with the following roles and background:



1st row from the left: Jean-Marc Randin, Jacques Besson and Christian Castricone
2nd row from the left: Fabienne Félix, Mauricio Leal and Nadja Ruffiner

Jean-Marc Randin - Chair

Jean-Marc is a psychologist, client-centered psychotherapist, and trainer in Lausanne. He has been in private practice since 1994, and used to teach PCA in several high schools for social workers. From 1999 to 2001, he directed the French translation of *The Carl Rogers Reader*, published in 2001 under the title *L'approche centrée sur la personne*. He was a board member of the WAPCEPC from 2006 to 2012, is co-founder and Managing Editor of the journal *ACP Pratique et recherche*, a member of *pca.acp*, and co-founder of the Swiss institute IFAACP.

Jacques Besson - Finance

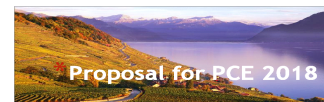
Jacques is an economist and senior civil servant in the Swiss federal administration. He has worked at the Federal Department of Home Affairs as a special counsellor for the Swiss Health Minister since 2001. He previously worked for the Federal Department of Economic Affairs representing Switzerland in two committees at the *World Trade Organization* and participated in the preparation of bilateral political and economic meetings with other European countries. He has experience in organizing lectures and is also in charge of finance for a non-profit organization.

Christian Castricone - Organization and administration

Christian has had training in commercial and printing business. He has ten-year experience of the PCA by attending individual and encounter groups sessions in Lausanne.

Fabienne Félix - Organization and administration

Fabienne works in a multinational company within the team of one of the senior executives. She is in charge of internal communication and supports organizational development. Her experience includes organizing conferences as well as lectures for an international group.



Mauricio Leal - Organization and administration

Mauricio is a psychologist who has also trained to become a client-centered psychotherapist as well as being an information technology professional. He is a member of the *pca.acp*. Being born and raised in Bogotá, Colombia and having completed his studies in Switzerland, he is sensitive to cultural diversity and its challenges.

Nadja Ruffiner - Organization and administration

Nadja is a psychologist, in training to be a person-centered psychotherapist. She is a board member of "Group psychotherapy" of the *pca.acp*. Her work experience over the last 10 years is in the domain of trauma therapy and emergency psychology, focused on crisis and stress management. She also used to be assistant researcher at the University of Lausanne, in charge of coordinating international seminars for the group for qualitative research methods in health psychology. She has a private practice based on person-centered therapy.

Support groups and extended team

Support groups will be established by the core team to create and maintain the conference website, follow up on enrolments, payments, etc. A team of volunteers will also be present throughout the conference.

2. Organizing associations

PCE 2018 will be co-organized by two associations: the Swiss Association for the Person-Centered Approach "*pca.acp*" and the Swiss training institute "IFAACP".

pca.acp is active in training and in providing psychotherapy and counseling, both in German and in French. It consists of more than four hundred professionals, making it the largest psychologists' association in Switzerland. It is a founding member of the WAPCEPC.

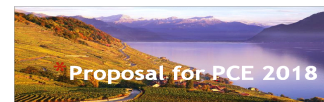
IFAACP is a regional association active in psychotherapy and in psychology in various PCA fields, such as education, social work and consulting. It mostly provides supervision, advanced continuing education, and professional counseling.

Switzerland being a multicultural and multilingual country, the organizing associations and their members are diverse in language and cultural backgrounds. Furthermore, *pca.acp* and IFAACP have connections to Austrian, German, French and Italian PCA associations, making it possible for us to work with colleagues from these language areas, and to participate in promoting PCE in these countries.

3. Our experience

The organizing associations and several of our members were involved in the organization of conferences and lectures, such as:

- 'Internationale Tagung für personzentrierte Kinder- und Jugendlichenpsychotherapie', an international conference on person-centered child therapy that took place in 2012 in Zürich ;
- 'Promoting change', a public lecture of Alberto Zucconi which we organized in 2004 on the campus of the *Ecole Polytechnique Fédérale de Lausanne* (EPFL) – same site as for PCE 2018. It attracted some 170 people.
- 'L'éducation Montessori hier, aujourd'hui, demain. Une vision sociale', another lecture, organized in 2007 in connection with the international year of the *Montessori Centenary*.



4. Scientific committee

So far, the scientific committee includes:

* **Veniamin Kolpachnikov (Russia)**

Veniamin Kolpachnikov is an associated Professor of National Research University Higher School of Economics (Moscow, Russia), Vice-President of Russian Society of the Person-Centered Approach, Organizer of 11-th International Forum on PCA (Ershovo, Russia).

* **Judy Moore (UK)**

Judy Moore is former Director both of the Centre for Counseling Studies and of the University Counseling Service at the University of East Anglia, Norwich, UK. She was the Chair of the Organizing Committee for PCE2008 and has also been involved in the organization of several small conferences at UEA. She retains an affiliation with UEA and remains actively involved with the PCA as well as being a Certifying Coordinator of the Focusing Institute, New York.

* **Jean-Marc Randin (CH)**

See under "Organizing team".

* **Bill Stiles (USA)**

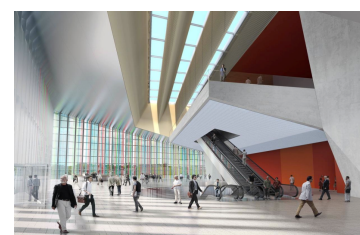
Bill Stiles is Professor Emeritus of Psychology, Miami University, Oxford, Ohio, USA, and Adjunct Professor of Psychology at Appalachian State University, Boone, North Carolina, USA. He has been President of Division 29 (Psychotherapy) of the American Psychological Association and of the Society for Psychotherapy Research. He has served as Editor of *Psychotherapy Research* and *Person-Centered & Experiential Psychotherapies* and Associate Editor of *British Journal of Clinical Psychology*.

Additional members with international background and representing the various perspectives and orientations within PCE, including one member of the WAPCEPC Board, will join the committee.

5. Venue and cost

The Swiss Tech Convention Center

Located at the heart of Europe in Switzerland, the Swiss Tech Convention Center (STCC) is a brand new, ultramodern building (opening Spring 2014). Set against a spectacular backdrop, its futuristic design makes it a unique building in Europe. Established within the campus of the prestigious *Ecole Polytechnique Fédérale de Lausanne* (EPFL) and of *Lausanne University* (UNIL), where teachers and students meet from around the world, it makes the STCC an ideal platform for international exchange.



We warmly invite you to have a look on www.tstcc.ch



Lausanne - Switzerland - 10-14 July 2018

Accommodation

Most of the accommodation will be provided on site, other accommodation will be available in the city of Lausanne, some 15 minutes away by public transport. We will also be able to provide low accommodation prices for students. Lunches will be served on site.

Cost

From the very beginning, we worked on the financial issue of our project. For us, it is a priority to provide here in Switzerland an affordable conference for our colleagues coming from all over the world. We found with the STCC a real partner with which we could collaborate in order to arrive at a good solution. As a result, we will be able to propose a conference package at a very competitive price. This package will include at least conference fees and all lunches and dinners, and maybe even accommodation, thus avoiding extra costs for participants. There will also be reduced prices for students, and scholarship places.

Access

By plane. Served by all Airlines, Geneva International Airport (GVA) is the closest major airport to Lausanne. Trains depart from a railroad station in the airport at frequent intervals, reaching Lausanne in about one hour.

By train. International trains arrive at Lausanne CFF main railroad station (direct line from Geneva Airport).

Lausanne

Lausanne is a charming city, population 135'000, ideally located along the shore of Lake Léman (known as Lake Geneva), between Geneva and Montreux (well known for its Jazz Festival), in an amazing area surrounded by mountains and the renowned UNESCO Lavaux Vineyard Terraces. Lausanne also hosts the Olympic Committee and is as such designated the Olympic Capital.

Culturally, Lausanne offers several museums, particularly the famous Olympic museum and the museum of photography. Built on three hills in medieval times, it has several historical sites of interest, the Cathedral of Lausanne which was consecrated in 1275, the St-François Church around the same age, the St-Maire Castle built in the 14th century and the town hall in the 17th century.



6. Theme : Growing a Person-Centered Society

Person-Centered and Experiential counselors and therapists know that there is great constructive potential within each person. The PCE approach is used by a wide circle of professionals and non-professionals to deal creatively with those around them.

We have something important to say to individuals working in the helping professions, in universities, in high schools, in training programs, in newspapers, and in the whole social environment. With decades of experience, observations, research, and practice behind



us, we can influence society with PCE concepts of 'being human' that we ourselves deeply trust in.

As members of the helping professions, we can have a powerful impact on the broader socio-cultural view of the person and human development. This impact is much needed at this time.

In education, for example, here in Switzerland, we notice many signs that children and teenagers are suffering from a lack of consideration of their human potential. However, many of the professionals who work in education seem to lack references that would empower them to do things differently. They seem to be stuck in a cultural view of the person that is mainly based on distrust and control; they were taught to be the 'expert', the one who knows.

As PCE professionals, we can show a different way! We can defend and promote our conception and experience of the person as trustworthy, as able. We can take opportunities to say forcefully that when the person is considered, when a climate of facilitative attitudes is provided, then a constructive process will occur in each and every human being.

The PCE community continues to develop theory, research, and practice and bring these resources to many professional fields and to society as a whole. Even though our perspective is this of the minority, we can remain proud and sure of our concepts and be transparent and confident in presenting them. The impact we can have relies on this, and on how strong and determined we are in not losing what makes the essence of our approach and of our way of being.

Through offering our chosen topic of 'Growing a Person-Centered Society' for PCE2018 we hope to stimulate contributions and reflections on Person-Centered and/or Experiential theory of personality, on research about the inner dynamics of the person throughout the therapeutic process, on the cultural impact of PCE practice, and on many other related topics. We hope that, following our conference, participants will feel truly empowered to return to bring about positive change in their respective worlds.

Finally, the team is very enthusiastic and would be honored and pleased to be entrusted with the organization of the PCE 2018 conference.

Kind regards,

On behalf of pca.acp and IFAACP,
The organizing team